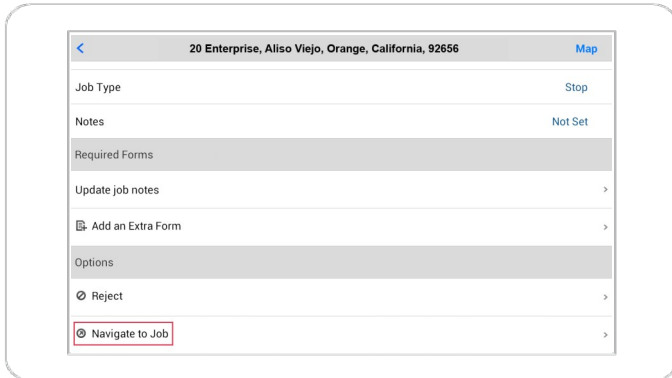


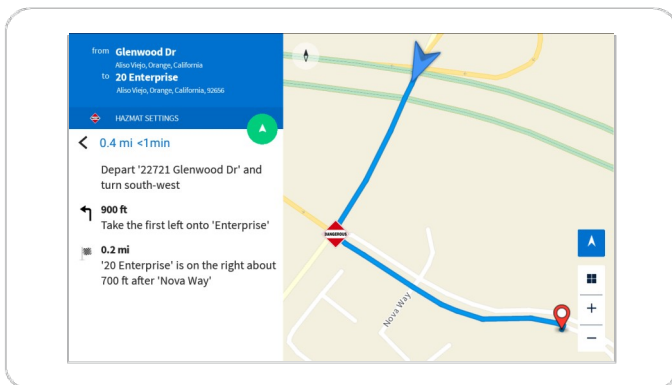


Navigating to a WorkPlan Job

1. From the **Jobs** screen in **WorkPlan** select the job to navigate to.
2. Tap **Navigate to Job**.




3. Depending on your setting for **Landing Page from External Apps** (under **Settings > General**), Navigation GE launches directly into the navigation instructions (**Guidance Screen**) or displays the **Route Overview Screen** with the destination set to the job's address.







Last Updated: March 2018

4. On the **Route Overview** screen, you can view the route and perform these actions:

- Tap **<** to go back.
- Tap **▲** to start navigating.
- Tap **Hazmat Settings** to review and change hazardous materials **Load Type** settings. If any hazmat settings affect your vehicle, the hazmat icon  displays on the map.

Providing feedback about a location

1. From the **Map** screen, tap the **Mark it** flag  to save your current location.
2. Later, when you are not driving, you can provide feedback about saved locations.
3. From the **Menu**  select **Feedback**.
4. Tap **Marked Locations** and select the location you marked earlier.
6. To enter your feedback, tap on the text 'Please enter your feedback about this location'.
7. To send your feedback, tap the **Send**  icon.

Note: If your final destination does not match the location in the map, you can tap the **Feedback** icon  to submit a correction.

Using Hours of Service (HoS)


If you are using **Hours of Service** within **WorkPlan v3.5** or later, your HoS status clocks are displayed along the bottom of the map within **Te-Navigation GE**. The values of the HoS status clocks depends on whether your HoS ruleset type is for US federal or California rules.

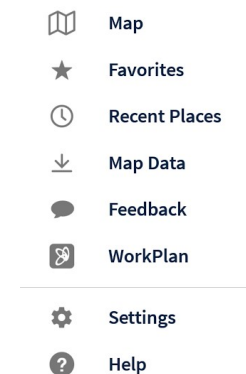
The HoS status clocks show:

- Remaining driving time (**Driving**)
- Remaining on-duty time (**Day** and **Week/Cycle**)
- Time spent in the **Current Status**

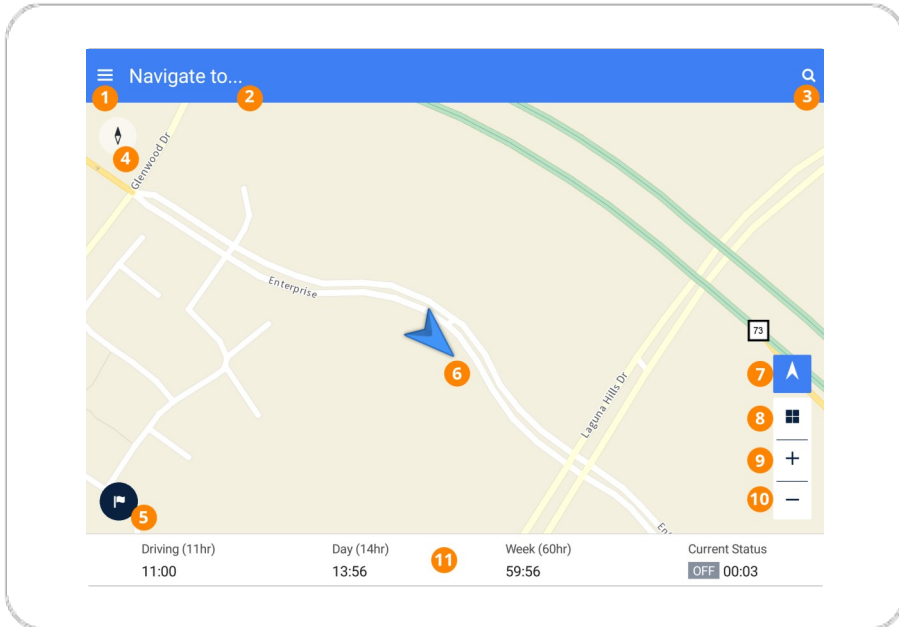
Driving (11hr)	Day (14hr)	Week (60hr)	Current Status
11:00	13:56	59:56	ON 00:03

Other tasks

Tap the **Menu** icon  in the top left-hand corner of the **Map** screen in 'Follow view' to open the **Menu**:

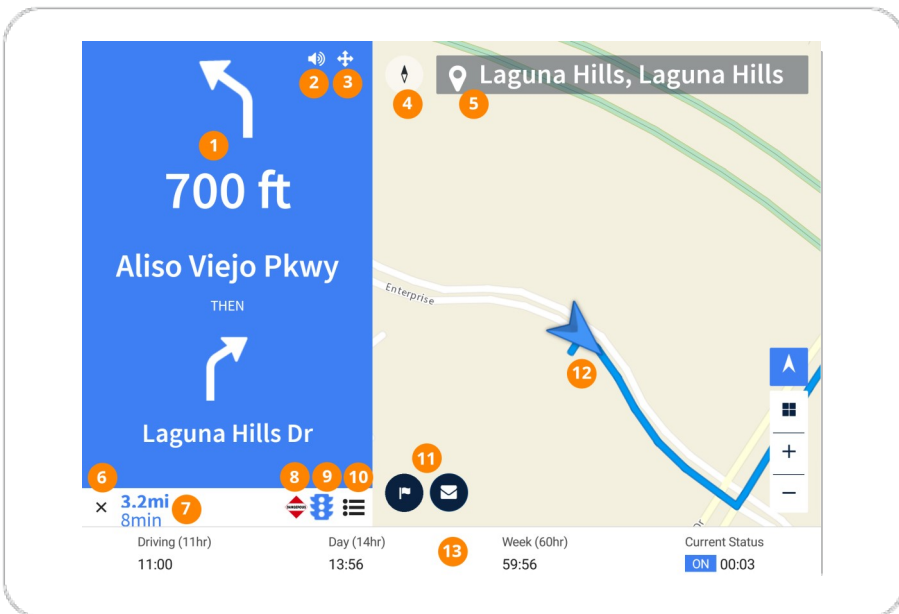


- **Map** - Navigate to an address or POI
- **Favorites** - Tap to navigate to a saved location
- **Recent Places** - Select a location to which you have previously navigated.
- **Map Data** - Download map data or view which maps are already downloaded.
- **Feedback** - Provide general feedback or feedback about a location.
- **WorkPlan** - Access WorkPlan.
- **Settings** - Change vehicle, route or general settings (some settings require permissions).
- **Help** - Access the in-app help.



Follow view

1. **Menu** - Access the main menu. See reverse for menu options.
2. **Navigate to** - Search for a location or POI, or select a recent or saved location.
3. **Search** - Search for a location or POI, or select a recent or saved location.
4. **Compass** - Tap to switch between the map showing north as up or the direction of travel as up.
5. **Mark it flag** - Tap to save your current location, to provide feedback about it.
6. **Location** - The arrow indicates your current location.
7. **Follow location** - Tap to resume following your location on the route. This icon appears if you pan the map.
8. **2D/3D** - Tap to switch between 2D and 3D perspectives on the map.
9. **Zoom in** - Zoom in on the map.
10. **Zoom out** - Zoom out on the map.
11. **HoS status clocks** - Tap to open the HOS screen in WorkPlan.



Guidance view

1. **Next instructions** - The next two steps in the directions.
2. **Mute/Unmute** - Turn the volume on or off.
3. **Safety mode** - Display instructions without the map to avoid distractions.
4. **Compass** - Tap to switch between the map showing north as up or the direction of travel as up.
5. **Destination** - The location that you are navigating to.
6. **Close** - Exit the turn-by-turn directions. (Returns to Jobs if you are using WorkPlan and you arrive at your destination.)
7. Remaining distance and time
8. **Hazmat indicator** - This route has hazardous material settings defined.
9. **Traffic indicator** - This route uses live and/or historic traffic data.
10. **Directions** - View a list of directions to your destination.
11. **Mark it flag** - Tap to save your current location, to provide feedback about it. If you arrive at an incorrect destination, you can also use the **Feedback** icon to submit an address correction. See the **Help** for details.
12. **Location** - The arrow indicates your current location.
13. **HoS status clocks** - Tap to open the HOS screen in WorkPlan.